



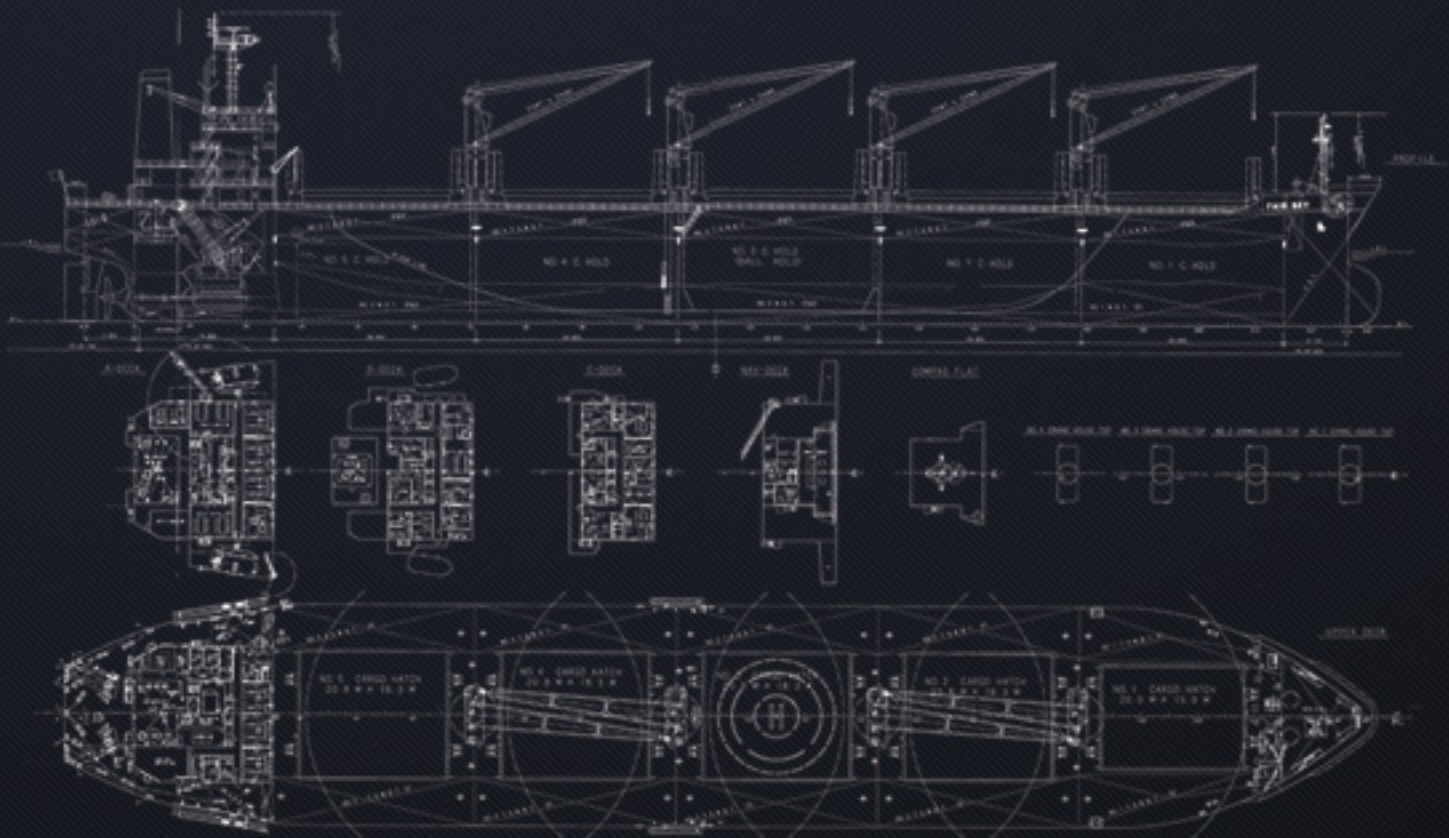
PT. PERUSAHAAN PELAYARAN

GURITA LINTAS SAMUDERA

JL. Tomang Raya No. 47 E, Jakarta Barat 11440, Indonesia
T +6221 568 6369 F +6221 560 0983



MV. NAZIHA





PT.PERUSAHAAN PELAYARAN

PT. GURITA LINTAS SAMUDERA

See Beyond The Sea

Jl. Tomang Raya 47E, Jakarta-11440

Ph. 021-5686369 Fax. 021-5600983

TELEX 43335 LINTAS IA

Cable Address: Lintasship JKT

www.lintassamudera.co.id

Name of vessel	: MV NAZIHA
Official Number	: 2011 Pst No.6652/L
Call Sign	: P N U N
Nationality	: Indonesia
Type of Vessel	: Bulk Carrier
IMO Number	: 9 2 0 8 3 7 0
Port of Registry	: Jakarta
Keel Laid	: Jun 15th 1999
Data Launched	: Nov 12th 1999
Build / Delivery Date	: Mar 01st 2000
Builder	: Sanoyas Hishino Meisho Corporation, Japan
GRT (Int/Suez/Pnma)	: 27,560 / 28,344 / 28,344
NRT (Int/Suez/Pnma)	: 16207
DWT (summer/tropic/winter/)	: 48,369 / 49,674 / 47,068
Draft (Summer/tropic/winter)	: 11.695 / 11.938 / 11.452
Displacement (smr/tpc/wint)	: 56,178 / 57,483 / 54,877
Freeboard (smr/tropic/winter)	: 4.898 / 4.655 / 5.141
Light ship weight	: 7,809 mt / 1.878 m
Classification	: Nippon Kaiji Kyokai (NKK)
Number	: 0 0 0 5 3 1
Length Over All	: 187.30 m
Length B.P Moulded	: 180.00 m
Breadth Moulded	: 32.20 m
Depth Moulded	: 16.55 m
Max Air Draft	: 39.50 m
TPC (@ light ship / @ full draft)	: 44.70 / 53.56
Hatches	: 5 (Five)
Hatches Dimensions #1	: 20.00 m x 15.00 m x 1.75 t/m2
(LengthxBreadthxStrength) #2~5	: 20.80 m x 18.30 m x 2.20 t/m2
Hold size #1	: 27.2 x 12 (F) 24 (A) m
#2 - #4	: 27.2 m x 24 m
#5	: 27.2 x 24 (F) 12 (A) m
Flat Tanktop dimensions #1	: 27 x fwd 14.7,mid 20.7,aft 23.4
#2 - #4	: 27 m x 23.4 m
#5	: 27 x fwd 23.4,mid 19.8,aft 11.7
Allowable Load Strength	: Homogenous
Double Bottom No.1 & 5	: 21.23 mt / m2
No.2 & 4 Hold	: 14.05 mt / m2
No.3 Hold	: 24.04 mt / m2
Upper Deck	: 3.80 mt / m2
Cargo Hatch Cover No.1	: 1.75 mt / m2
No. 2 - 5	: 2.20 mt / m2
Hatch Cover	: End Folding Type,Hydraulic Driven
Deck Crane	: 4 x Electro Hydraulic
	: Lifting Capacity (SWL) 25 mt
	: Max work radius 24 m at 25 deg
	: / Min work radius 4.5 m at abt 80 sec
	: Hoisting height 35 m at min radius
	: Hoisting speed @25mt : 19.5m/min,
	: @10mt : 39m/min, @5mt : 63m/min
	: Lowering speed 63 m/min at rated load
	: / Lufing time abt 38 sec

P & I Club	: The Standard	
H & M Insurance	: PT Asuransi Jasa Indonesia (Jasindo)	
MMSI	: 5 2 5 0 1 6 6 8 4	
IMN C Tix No.	: 452 501 876	
Email	: naziha@skyfile.com	
Iridium Sat Phone	: +88 1631 847 637	
Main Engine	: Diesel United Sulzer 6RTA48T x 1 set	
Output	: MCR : 9,800 PS x 110.0 rpm	
Output	: NOR : 8,820 PS x 106.2 rpm	
Aux. Engines (2 set)	: 5 DK-20 (Daihatsu) x 3 set	
Main Diesel	: Four Stroke, 441 kw x 720 rpm	
Generator	: FE41CS-10 (Taiyo Electric) x 3 set	
	: drip proof, self-ventilated, brushless	
	: Voltage: 450V 60Hz 500 KVA	
Emergency	: BF6L913 (MES Machinery)	
	: Output: 135 ps x 1,800 rpm	
	: Taiyo Electric MFG	
	: 6,200 mm (pitch 4,232 mm at 0.7 R)	
Propeller	: 4 (Four) blades solid keyless type	
Material	: Ni-AL-Bronze	
Diameter	: 5,800 mm (pitch 4,390 mm)	
Capacity of Cargo Hold	Capacity	
GRAIN		
	CBM	CBF
Frame 179-215 Hold #1	10669.8	376804
Frame 143-179 Hold #2	13054.8	461031
Frame 107-143 Hold #3	12582.4	444348
Frame 71-107 Hold #4	13415.9	473783
Frame 35-71 Hold #5	12058.6	425850
Cargo Hold Grand Total	61781.60	2181816
BALE		
	CBM	CBF
Frame 179-215 Hold #1	10391.2	366965
Frame 143-179 Hold #2	12655.5	446929
Frame 107-143 Hold #3	12170.9	429816
Frame 71-107 Hold #4	13015.4	459639
Frame 35-71 Hold #5	11819.5	417406
Cargo Hold Grand Total	60052.50	2120755
Fuel Oil (SG 0.94) capa	= 1,928.70 cbm / 95% full = 1,738 mt	
Diesel Oil (SG 0.88) capa	= 284.40 cbm / 95% full = 235.10 mt	
Lub Oil (SG 0.90) capa	= 41.6 cbm / 95% full = 36.4 mt	
Fresh Water capa	= 174 cbm	
Water Ballast (SG 1.025) tank	= 24,715.20 cbm / 25,334 mt	
Grabs	: 4 x 12 cbm capacity remote control	
Consumption per day	: Speed abt 13.5 knots @ 29.00 mt IFO 380 cst	
	: Ballast voyage abt 12.5 knots @ 23.50 mt IFO 180 cst	
	: AE Cons at sea: 1.6 mt IFO	
	: ME Cylinder Oil abt 295 ltr / System Oil abt 70 ltr	
	: FW Cons abt 15 mt	