



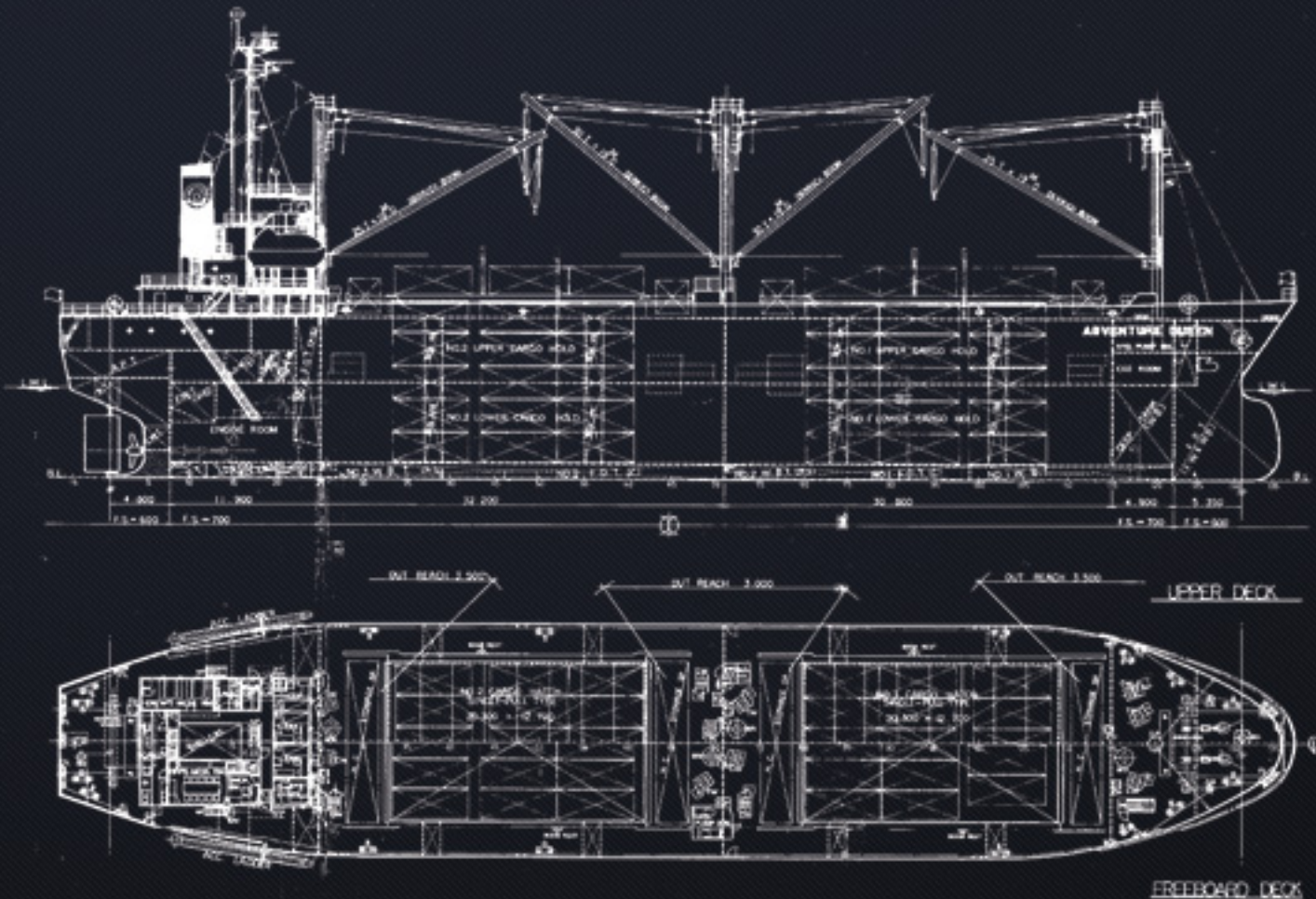
PT. PERUSAHAAN PELAYARAN

GURITA LINTAS SAMUDERA

JL. Tomang Raya No. 47 E, Jakarta Barat 11440, Indonesia
T +6221 568 6369 F +6221 560 0983



MV. AYUMAS SAMUDERA





PT.PERUSAHAAN PELAYARAN

PT. GURITA LINTAS SAMUDERA

See Beyond The Sea

Jl. Tomang Raya 47E, JakartaM 11440

Ph. 021-5686369 Fax. 021-5600983

www.glsship.com

Name of vessel	: MV. AYUMAS SAMUDERA
Nationality	: Indonesia
Official Number	: 1998 Ba. No.1192/L
Port of Registry	: Jakarta
Call Sign	: Y F U D
When Build	: 1990, Japan
Builder	: Shin Kurushihima Dockyard Co. Ltd.
Material	: Steel
Gross Tonnage	: 5552 ts
Net Tonnage	: 2350 ts
Dead Weight	: 6944.00 rt
Grain Space #1	: 6297.94 m3
Grain Space #2	: 6899.30 m3
Total	: 13197.24
Bale Space #1	: 5952.98 m3
Bale Space #2	: 6512.79 m3
Total	: 12465.77 m3
Draft Maximum	: 6879 m
Speed	: abt 10 knots
Consumption	
MFO	: 9.0 ts
MDO at Sea	: 0.90 ts / day / at Sea
MDO at Port	: 1.10 ts / day / at Port
Length Over All	98.17 m
Length Between Perpendicular	: 89.95 m
Breadth	: 18.80 m
Depth	: 12.90 m
Deck	: TWEEN
Deck Load Capacity	: Inner bottom 20 ts / m2 ; 2nd Deck 3 ts / m2
Bulkheads	: FIVE (5)
Holds	: TWO (2)
Hatches #1	: 20.3 m x 12.7 m
Hatches #2	: 20.3 m x 12.7 m
Class Character	NK
Class Character Number	: 900823
Ballast Tanks	: 1118.16 m3
Freshwater Tanks	: 199.89 m3
Fuel Oil Tanks A	: 88.79 m3
Fuel Oil Tanks B	: 489.77 m3
Total	: 578.56 m3

INMARSAT-C ID No.	: 452500033
IMO Number	: 9004669
Derricks	: 25 ts x 2 set / 30 ts x 2 set
Main Engine	: Hansin Diesel 6 EL 40
M/E Dimension	:
Brake Horse power	: 3300 PS
RPM	: 240
Maker	:
When Made	:
Generator Engine	: Yanmar 56165 LHT 360 PS 6 CHL-HTNA 145 PS
Generator AC	: 445 Volt x 60 C/S x 300 KVA x 1200 x 120 x 1800
Propeller	
Number of Blade	: 4 (four)
Material	: Manganese Bonze (Cast)
Diametre	: 3100 mm
Pitch	: 1888 mm
Maker	: Manganese Bonze (Cast)
When Made	: Sep, 08th 1989
Boiler	: Composite Syst. Horiz. Horz Smoke Tube Boiler
Number	1 (one) Set
Heating Surface	: 49.7 m2
Working Pressure	: 6.0 kg/m2
Fuel	: Heavy Fuel
Maker	: Tortoke Eng. Co. Ltd.
When Made	: July, 21st 1989
Life Boat	: 2 (S) Motor (P) Oar
No. of Person	: 19 Person
Nav. Equipment	: Gyro Compass Auto Pilot Radars of Eleclog Echo Sounder Loran Fax Rec NSD-1585
Main Aux Transmitter	:
Reciever	:
Auto Alarm	:
Life Boat Transmitter and Receiver	: 1 (one) set