



PT. PERUSAHAAN PELAYARAN

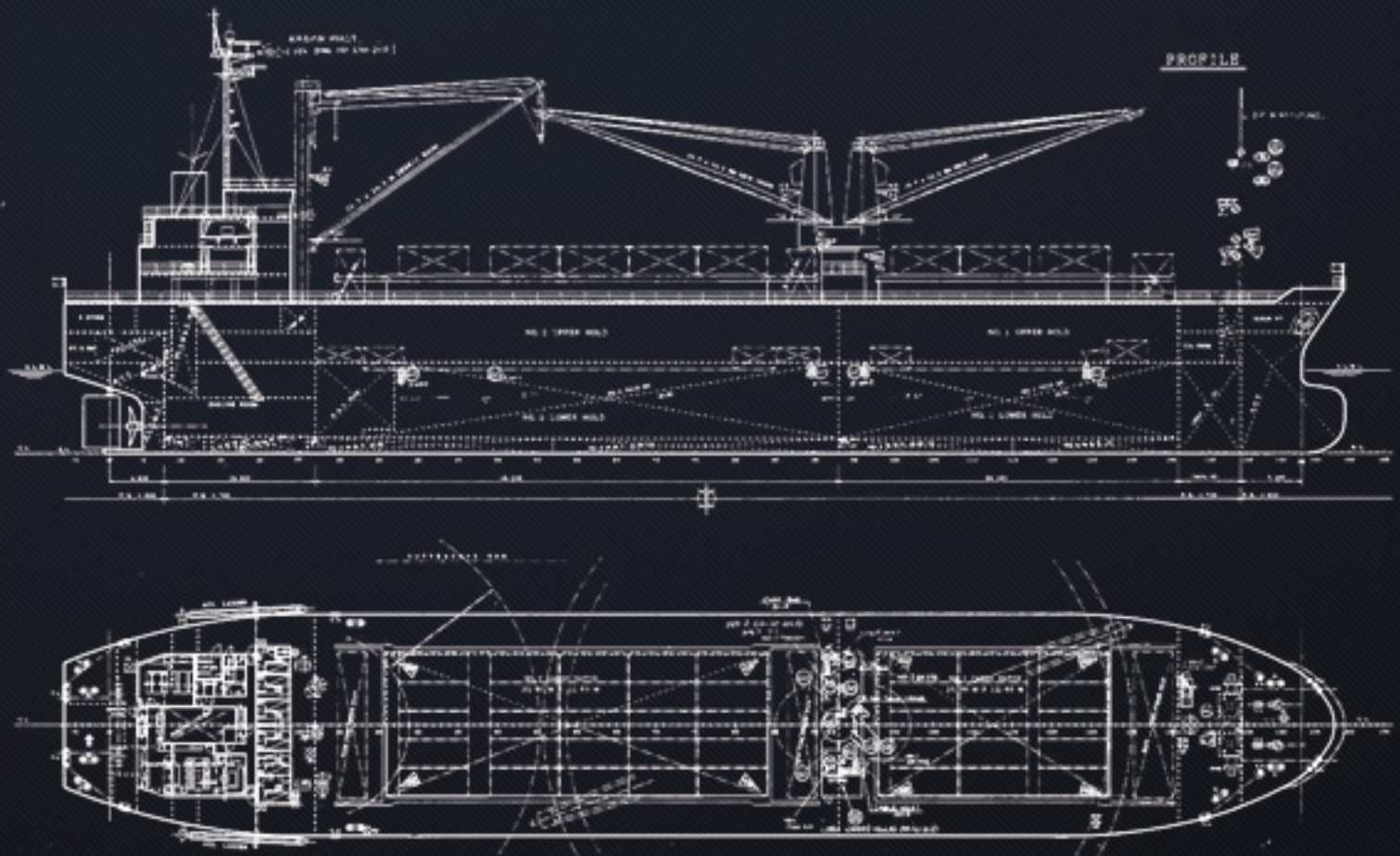
GURITA LINTAS SAMUDERA

JL. Tomang Raya No. 47 E, Jakarta Barat 11440, Indonesia

T +6221 568 6369 F +6221 560 0983



MV. ARDHIANTO





PT.PERUSAHAAN PELAYARAN

PT. GURITA LINTAS SAMUDERA

See Beyond The Sea

Jl. Tomang Raya 47E, Jakarta-11440

Ph. 021-5686369 Fax. 021-5600983

www.glsship.com

Name of vessel	: MV. ARDHIANTO
Nationality	: Indonesia
Call Sign	: Y G O F
Type of Vessel	: General Cargo
IMO Number	: 9100528
Port Registry	: Jakarta
When Build	: 1994
Builder	: Shin Kochiyuko Co., Ltd
Material	: Steel
Inmarsat C	: Steel
Gross Tonnage	: 7,633 ts
Net Tonnage	: 2,336 ts
Displacement	: 12,021 ts
Depth	: 13.20 m
Depth from 2nd deck to keel	: 8.00 m
Summer Dead Weight	: 9,099 kt
DWCC	: abt 8,000 ts
Draft Maximum	: 7.309 m
Speed	: abt 13 knots
Length Over All	: 113.22 m
Length Between Perpendicular	: 105.40 m
Breadth (moulded)	: 19.60 m
Deck	: Twin Decker
Hatches Dimensions	
upper deck = Mc Gregor #1	: 20.30 m x 12.60 m
upper deck = Mc Gregor #2	: 33.60 m x 12.60 m
second deck = Pontoon #1	: 21.00 m x 12.60 m
second deck = Pontoon #2	: 36.40 m x 12.60 m
Hold Dimensions	:
hold #1 upper deck	: 30.10 m x 17.28 m x 5.2 m
hold #1 second deck	: 30.10 m x 17.28 m x 6.7 m
hold #2 upper deck	: 46.20 m x 17.28 m x 5.2 m
hold #2 second deck	: 46.20 m x 17.28 m x 6.7 m
Deck Load Capacity	
tank top strength	: 10.0 ts / m2
second deck strength	: 3.9 ts / m2
Tank Top Strength	: 10 ts / m2
TPC (Ton per cm) at max draft	: 18 TPC
Derrick	: 25 ts x 24 m x 1 set
Cranes	: 25 ts x 24 m x 2 set
Outreach Derricks	: 3.50 m
Propeller	
Number of blade	: 4 (four) - 1set
Material	: KA/BC3 (Ni - A1 - Bronze)
Diametre	: 3650 mm
Pitch	: 2366 mm
Maker	: Kamome Propeller Co., Ltd.

Main Engine	: Makita-Man-B&W 6L35MC x 1 set	
Brake Horse power	: 3300 kw / 4487 ps	
RPM	: Service : 199 / Maximum : 210	
Maker	: Makita Corporation	
When Made	: 1994	
Main Generator	: 400 kVA x 450V x 60Hz x 3Ø	
Maker	: Taiyo Electric MFG Co., Ltd.	
Consumption		
MFO	: 11.50 ts / day	
MDO	: 1.0 ts / day	
Life Boat	: Two (2) sets	
No. of Person	: 20 Person	
Capacity of Cargo Hold	Capacity	
	Cbm	Cbf
BALE		
#1 Hatch Part	: 522.42	18449
#1 Upper Hold	: 2522.82	89093
#1 Lower Hold	: 2663.78	94071
#1 Cgo Hold Total	: 5709.02	201613
#2 Hatch Part	: 864.69	30536
#2 Upper Hold	: 4137.81	146126
#2 Lower Hold	: 4213.81	148810
#2 Cgo Hold Total	: 9216.31	325472
Cargo Hold Grand Total	14925.33	527085
GRAIN		
#1 Hatch Part	: 522.42	18449
#1 Upper Hold	: 2982.49	105326
#1 Lower Hold	: 2847.48	100558
#1 Cgo Hold Total	: 6352.39	224333
#2 Hatch Part	: 864.69	30536
#2 Upper Hold	: 4788.38	169100
#2 Lower Hold	: 4572.49	361112
#2 Cgo Hold Total	: 10225.56	361112
Cargo Hold Grand Total	16577.95	585445
Tanks capacity		
Ballast Tanks	: 2226.83 cbm	
Freshwater Tanks	: 181.47 cbm	
Diesel Oil Tanks DO / A	: 139.08 cbm	
Fuel Oil Tanks MFO / C	: 557.50 cbm	
Class Character	: NK : NS* & MNS*	
Class Character Number	: 942998	
Auxiliary Boiler	: Horizontal Smoke Tube Vertical Composite Boiler	
Model & No. of set	: MKSC-15-500/500 - 1set	
Heating Surface	: 13.62 / 77.59 m2 oil fired side / exh.gas side	
Steam Pressure	: 6 kgf / cm2	
Maker	: Tortoise Engineering	