



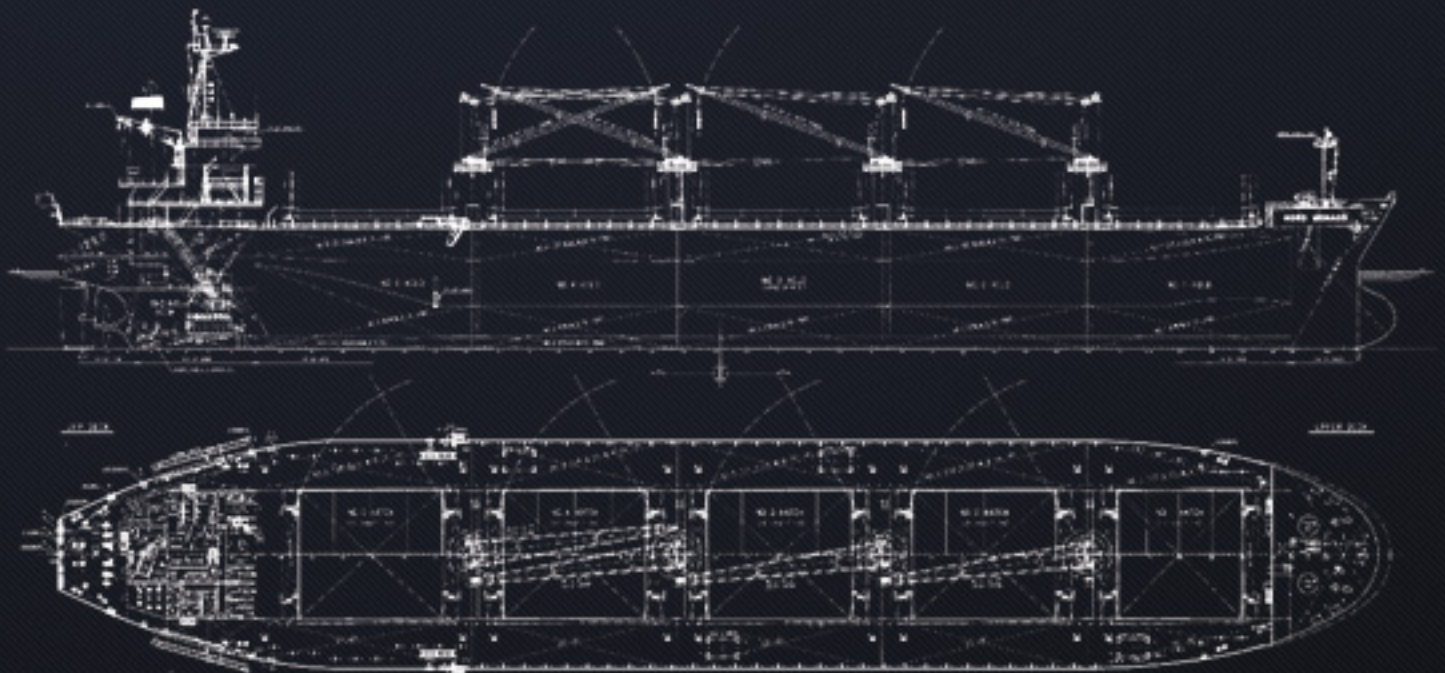
PT. PERUSAHAAN PELAYARAN

GURITA LINTAS SAMUDERA

JL. Tomang Raya No. 47 E, Jakarta Barat 11440, Indonesia
T +6221 568 6369 F +6221 560 0983



MV. AMMAR





PT.PERUSAHAAN PELAYARAN
PT. GURITA LINTAS SAMUDERA
 See Beyond The Sea

Jl. Tomang Raya 47E, Jakarta-11440
 Ph. 021-5686369 Fax. 021-5600983
 www.glssh.com

Name of vessel	: MV AMMAR
Official Number	: 2012 Pst No.7638/L
Call Sign	: YDZL
Nationality	: Indonesia
Type of Vessel	: Bulk Carrier
IMO Number	: 9237125
Port of Registry	: Jakarta
Keel Laid	: Feb 19th, 2002
Data Launched	: Apr 17th, 2002
Build / Delivery Date	: July 05th, 2002
Builder	: Mitsui Engineering & Shipbuilding Co., Tamano Works. Japan
GRT (Int/Suez/Pnma)	: 27986
NRT (Int/Suez/Pnma)	: 17077
DWT (summer/tropic/winter/)	: 50,296 / 51,628 / 48,966
Draft (Summer/tropic/winter)	: 11,925 / 12,173 / 11,677
Displacement (smr/tpc/wint)	: 58,136 / 59,468 / 56,806
Freeboard (smr/tropic/winter)	: 5,018 / 4.770 / 5.266
Light ship weight	: 7,840 mt
Classification	: Buerau Veritas (BV)
Length Over All	: 189,80 m
Length (P.P)	: 181,90 m
Breadth Moulded	: 32.26 m
Depth Moulded	: 16.90 m
Designed Load draft moulded	: 11.90 m
TPC	: 53.50 mt
Hatches	: 5 (Five)
Hatches Dimensions #1	: 17.40 m x 18.00 m
(LengthxBreadthxStrength) #2~5	: 20.30 m x 18.00 m
Hold size #1	: 17.40 m x 18.00 m x 28.80 m
#2	: 20.30 m x 18.00 m x 29.00 m
#3 & #4	: 20.30 m x 18.00 m x 29.10 m
#5	: 20.30 m x 18.00 m x 30.70 m
Flat Tanktop dimensions #1	: 28 x fwd 6.4,aft 23.6 m
#2 - #4	: 28 m x 23.6 m
#5	: 30.6 x fwd 23.6, aft 8.0
Allowable Load Strength	: Homogenous
Double Bottom No.1 & 5	: 20.00 mt/m2
No.2 & 4 Hold	: 16.00 mt/m2
No.3 Hold	: 25.90 mt/m2
Upper Deck	: 3.70 mt/m2
Cargo Hatch Cover No.1	: 2.41 mt/m2
Hatch Cover	: Nakata Mac Corp., Folding Type
Deck Crane	: 4 x Electro Hydraulic Lifting Capacity (SWL) 30.5 mt / Crane Length 9.87 m
Height from keel to top of antenna	: 48.30 m
Height of hatch coamings	: 1.60 m
Distance from sea water line to top of hatch coaming:	
No. 1 = Light : 14.0 m / Heavy Ballast: 10.3 m	
No. 3 = Light : 13.4 m / Heavy Ballast: 10.5 m	
No. 5 = Light : 12.8 m / Heavy Ballast: 10.7 m	

P & I Club	: The Standard
H & M Insurance	: PT Asuransi Jasa Indonesia (Jasindo)
MMSI	: 525 020 202
IMN C Tix No.	:
Email	: naziha@skyfile.com
IMN FBB Telephone	: +870 773 165 402
Main Engine	: Mitsui-Man B&W 6S50MCC x 1 Set
Capacity Output	: MCR : 8,090 kw x 127.0 rpm NSR : 6,875 kw x 120.3 rpm
Kind of FO	: H.F.O. (380 cst)
Main Diesel Generator	: 6N18AL-UV (Yanmar Diesel) x 3 set
Engine Output	: 550 kw x 900 rpm
Generator	: drip proof, self-ventilated, brushless maker: Nishishiba, 480 kw x 60 Hz
Emergency	: BF6L913 x 1 set Output: 135 PS x 1,800 rpm maker: MES Machinery Service
Generator	: Maker: Newage Int., 80 kw x 60 Hz
Propeller	: 4 (Four) blades solid keyless type
Material	: Ni-AL-Bronze
Interim shaft	: 5,800 mm (pitch 4,390 mm)
Interim shaft	: d:480mm x l:6400mm x 1 set
Capacity of Cargo Hold	Capacity
GRAIN	
	CBM CBF
165 - 198 Hold #1	11074.2 391085
132 - 165 Hold #2	13113.9 463117
99 - 132 Hold #3	13111.4 463029
66 - 99 Hold #4	13216.9 473783
31 - 66 Hold #5	12681.9 447861
Cargo Hold Grand Total	63198.30 2231847
BALE	
	CBM CBF
165 - 198 Hold #1	10391.2 366965
132 - 165 Hold #2	12655.5 446929
99 - 132 Hold #3	12170.9 429816
66 - 99 Hold #4	13015.4 459639
31 - 66 Hold #5	11819.5 417406
Cargo Hold Grand Total	60052.50 2120755
Fuel Oil (SG 0.95) capa = 1,883.90 cbm / 96% full = 1,720.90 mt	
Diesel Oil (SG 0.88) capa = 133.80 cbm / 96% full = 110.9 mt	
Lub Oil (SG 0.90) capa = 98.4 cbm / 96% full = 79.3 mt	
Bunker Consumption per day : Fully Laden: abt 13.50 knt on abt 30.5 mt IFO + abt 0.4 mt MGO	
In Ballast: abt 14.00 knt on abt 30.5 mt IFO + abt 0.4 mt MGO	
Port idle: abt 2.8 mt IFO + abt 0.4 mt MGO	
Port working: abt 4.7 mt IFO + abt 0.6 mt MGO	