



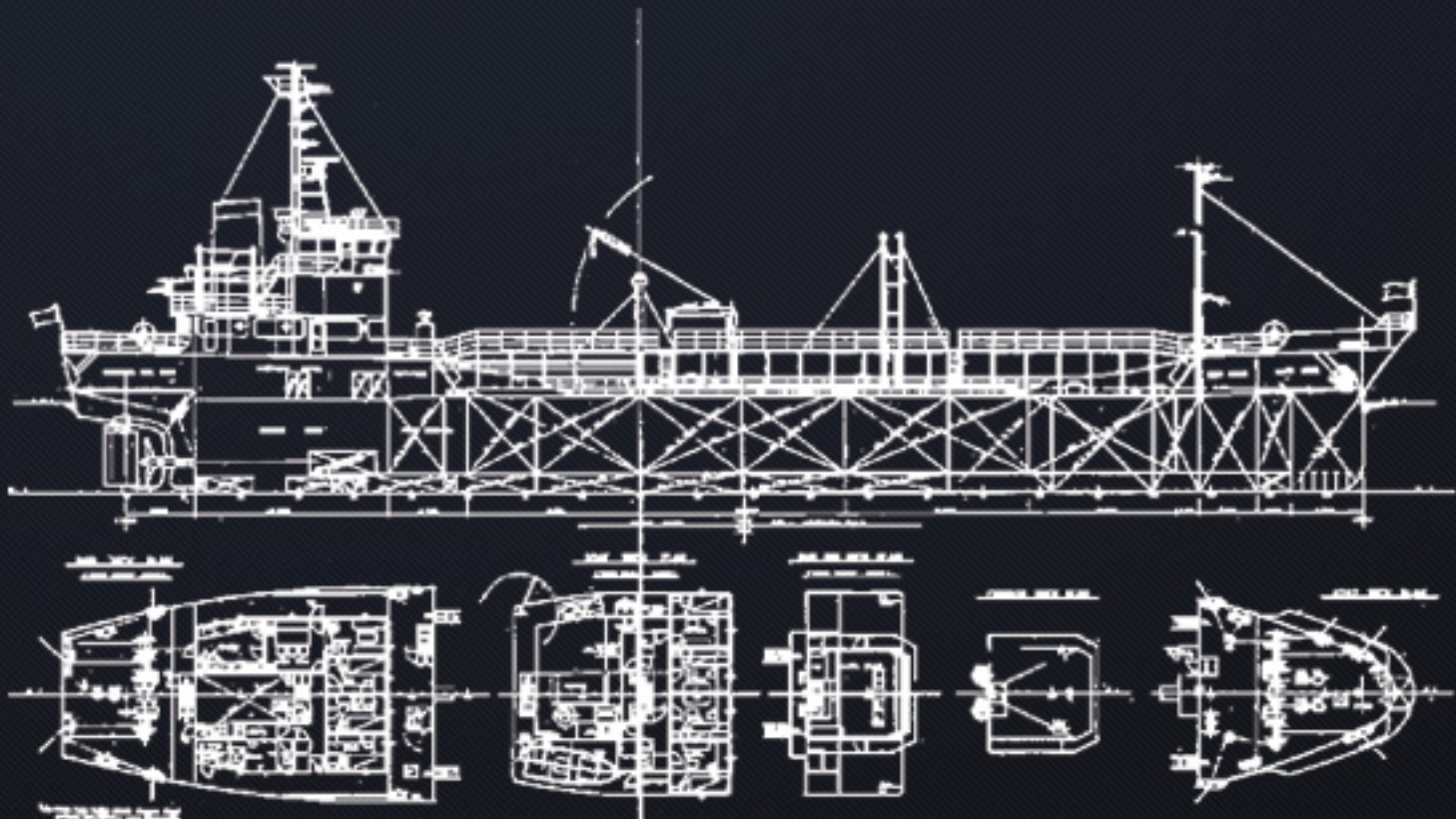
PT. PERUSAHAAN PELAYARAN

GURITA LINTAS SAMUDERA

JL. Tomang Raya No. 47 E, Jakarta Barat 11440, Indonesia
T +6221 568 6369 F +6221 560 0983



MT. SIL EXPRESS





PT.PERUSAHAAN PELAYARAN

PT. GURITA LINTAS SAMUDERA

See Beyond The Sea

Jl. Tomang Raya 47E, Jakarta-11440

Ph. 021-5686369 Fax. 021-5600983

TELEX 43335 LINTAS IA

Cable Address: Lintasship JKT

www.lintassamudera.co.id

Name of vessel	: MT SIL Express
Official Number	: 2009Pst no.6014/L
Call Sign	: P N D Z
Nationality	: Indonesia
Type of Vessel	: Chemical Tanker (IMO 2 Type)
IMO Number	: 9 0 6 2 5 9 4
Port of Registry	: Jakarta
Class Character	: BKI
Data Launched	: December 1992
Build / Delivery Date	: January 1993
Builder	: Nakatani Shipbuilding Co., Ltd., Japan
Builder's Hull No.	: 5 5 0
Last SS	: November 10, 2005
Last IS	: March 31, 2008
GRT (Gross Register Tonnage)	: 1083
NRT (Int/Suez/Pnma)	: 390
Marks of Tonnage Certificate	: GT.1083 No.1040/Ga
DWT (Deadweight)	: 1694 MT
Draft (Full / Light)	: 4.72 m / 1.79 m
Length (LOA / Registeed / LBP)	: 69.97 m / 65.10 m / 65.00 m
Breadth	: 11.3 m
Depth	: 5.15 m
Number of cargo tanks	: 8 tanks (4 x 2)
Cargo Tank Capacity	:
#1 P	: P = 117.541
#1 P	: S = 117.541
#2 P	: P = 200.295
#2 P	: S = 201.109
#3 P	: P = 227.871
#3 P	: S = 228.685
#4 P	: P = 181.456
#4 P	: S = 181.456
Total	: 1,455.954 cbm
Heating Colls	: Fitted
Double Hull	: Yes
Double Bottom	: Yes
Cargo Pumps	: Gear Type 500 cbm/h x 2 units
GMDSS Equipment	:
Navtex	: Anritsu, Model RR108A, 1 unit
EPIRB	: Furuno, Model FSO-400, 1 set
Rader Transponder	: Taiyo, Model TBR-P100, 1 set
Tranceiver	: Furuno, Model FM8, 2 sets
9 Ghz rader	: Furuno, Model FR-1525DA
Life Saving Equipment	:
Life Raft	: Fitted

P & I Club	: British Marine Luxemboug S.A.
H & M Insurance	: PT Asuransi Jasa Indonesia (Jasindo)
MMSI	: 525 016 563
Main Engine	: Hanshin, Model 6EL32G 2000 ps (1471 kw), 1 unit
Aux. Engines	: Showa Seiki, Model 6HAL-DTN 220 ps x 1200 rpm, 2 units
Aux. Engines	: Yanmar, Model 6CHL-TN 100 ps x 1800 rpm
Generator	: Taiyo, Model TWY30G 180 kva x 1200 rpm, 2 units
Generator	: Taiyo, Model TWY25C 80 kva x 1800 rpm, 1 unit
Boilers	: Miura, Model HTB-125L Max Pressure 5kg/cm2 Max Temp 200 deg C Output 1,250,000 kcal/h, 1 unit
Boilers	: Miura, Model KTH-S15(06) Max Pressure 5kg/cm2 Max Temp 200 deg C, Output 130,000 kcal/h (basis 85% M/E), 1 unit
Propeller	: 4 blades, Fixed Pitch type
Speed	: about 11 knots
Bunker Consumption	:
Main Engine	: abt 150 / 160 L/h (180 cst)
Aux. Engine	: abt 16 / 17 L/h (MDO)
FOT Capacity	: 79.66 KL (100%)
DOT Capacity	: 22.68 KL (100%)
Oil Water Separator	: Hyoshin, model HMS-100, 1m3/h 15ppm
Rader	: Furuno, FR-1525DA-3A, 1 unit Furuno, FR-1510DA-3A, 1 unit
Compass	: SR-165PKK, 1 unit 100 SLK, 1 unit
Gyro Compass	: TG-5000
Echo Sounder	: FDV-561
VHF	: Anritsu, Model RU-224A, 1 unit
Firefighting Equipment	:
Fixed gas extinguisher	: Fitted in engine room and pump room CO2 type, 45.4 kgx7
Fixed from extinguisher	: Fitted on trunk at cargo tank
Fire Detector	: Fitted, 2 in corridors and 2 in starways Smoke Detector
Manual Fire Alarm	: Fitted, 1 in Steering room 5 at deck entrances, 1 in galley
Fire Pump	: 100/55 m3/h x 20/48 m, 2 units in engine room
Emergency Pump	: 30m3 x 50m, 1 unit, in steering room in engine room